



## PACIFIC HEIGHTS

CLASSIC ALTA PLAZA PARK VICTORIAN WITH CONTEMPORARY FLAIR

**2661 CLAY STREET, SAN FRANCISCO**

*Presented by:*

**MALIN GIDDINGS & MAX ARMOUR**

415.531.5033

415.290.6058



*sf*properties.com



No. 2661 Clay Street is a charming Victorian home located on a very special block overlooking Alta Plaza Park. This detached home enjoys abundant natural light and vistas from north and south exposures and has interiors complimented by high ceilings, deep crown molding, bay windows, tall doorways and beautifully polished hardwood floors throughout. A jewel box in the true sense of the word! And what a location!

**2661 CLAY STREET,  
SAN FRANCISCO**

**OFFERED AT \$2,695,000**

*Presented by:*

**MALIN GIDDINGS**

415.531.5033

**MAX ARMOUR**

415.290.6058

**ABSTRACT**

- Built in 1870's
- South city light views and north Alta Plaza Park outlooks
- Expansive south deck with easy access to lush garden
- Living & dining room open to south garden
- 3 bedrooms, 2.5 baths
- 2 front off-street parking spaces



TRI Coldwell Banker, 1699 Van Ness Avenue, San Francisco, CA 94109 415.229.1211 Fax 415.563.3198

Coldwell Banker believes this information to be correct but has not verified this information and assumes no legal responsibility for its accuracy. Buyers should investigate these issues to their own satisfaction. Independently Owned and Operated by NRT Inc.



**2661 CLAY STREET,  
SAN FRANCISCO**

*Presented by:*

**MALIN GIDDINGS**

415.531.5033

**MAX ARMOUR**

415.290.6058

#### **HISTORY OF THE HOUSE**

This vintage and its six immediate neighbors are described in “Here Today—San Francisco’s Architectural Heritage,” by the Junior League of San Francisco, Inc., Chronicle Books, 1978, Pages 32-33:

“An unusually fine group of frame row houses is 2637-2643, 2649, 2655, **2661**, 2667 and 2673 Clay Street; all built in the early 1870’s, all with similar essentially Italianate, stylistic characteristics, suggesting that they were not only built at the same time, but by the same contractor. The use of redwood may be partially responsible for their preservation, but much of the credit must go to owners who have joined together to maintain these houses in mint condition.”

The house is also referenced in “Gables and Fables—a Portrait of San Francisco’s Pacific Heights” by Anne Bloomfield and Arthur Bloomfield, Heyday Books, Berkeley, CA, 2007, Pages 262-264:

“The group of Victorian houses facing Alta Plaza Park in the 2600 block of Clay Street have been known for forty years at least as ‘Clay Street Block,’ a special seal of approval in light of the fact the houses have been constantly well maintained, a veritable fashion show in the best taste demonstrating how Victorians can be beautifully preserved.”



TRI Coldwell Banker, 1699 Van Ness Avenue, San Francisco, CA 94109 415.229.1211 Fax 415.563.3198

Coldwell Banker believes this information to be correct but has not verified this information and assumes no legal responsibility for its accuracy. Buyers should investigate these issues to their own satisfaction. Independently Owned and Operated by NRT Inc.



**2661 CLAY STREET,  
SAN FRANCISCO**

*Presented by:*

**MALIN GIDDINGS**

415.531.5033

**MAX ARMOUR**

415.290.6058

#### **MAIN FLOOR**

The handsome brickwork of the driveway/walkway and pretty planter boxes provide a welcome to the covered entry with handsome double glass doors.

The inviting CENTER HALL with carved marble fireplace introduces the enduring charm of the Victorian era. Massive sliding doors faced with hammered metal embossing open to the FRONT PARLOR/STUDY which enjoys the outlook to Alta Plaza Park.

The spacious LIVING ROOM features a contemporary fireplace and striking coved ceiling for elegant entertaining. The adjoining DINING ROOM can comfortably seat a large dinner party.

Both public rooms enjoy abundant natural light from the south facing expanse transoms and sidelights of two pairs of French doors which open to the expansive south DECK and landscaped PATIO/GARDEN for alfresco dining and entertaining.

The open KITCHEN is the gourmet cook's delight with custom cabinets, baker's marble counter-tops and metallic backsplash. Top-of-the-line appliances include: Viking gas stove and custom ventilator, Sub-Zero refrigerator/freezer, dishwasher and microwave oven.

The POWDER ROOM off the foyer features classic wainscots, pedestal sink and separate WC.





2661 CLAY STREET,  
SAN FRANCISCO

*Presented by:*

**MALIN GIDDINGS**

415.531.5033

**MAX ARMOUR**

415.290.6058

#### SECOND FLOOR

Ascend the staircase to the bedroom landing with skylight overhead.

The spacious and sunny MASTER BEDROOM features expansive bay windows overlooking fabulous city vistas and expansive south views. The MASTER BATH has a marble vanity, wainscot surround, deep tub and skylight.

The spacious front BEDROOM with charming SITTING ROOM/PLAYROOM enjoys the verdant park outlook. It and the storybook middle BEDROOM share a FULL BATH with pedestal sink, tub with tile surround and skylight.

#### BASEMENT LEVEL

A finished room (unwarranted) and small bath are accessed from the back of the house at garden level as are the house utilities and additional generous storage.

#### OTHER

- Prior to submitting any offer, prospective Buyers are advised to review the Seller's Disclosure Package available on request.
- Taxes to be reassessed upon the sale of the property to approximately 1.163% of the purchase price.

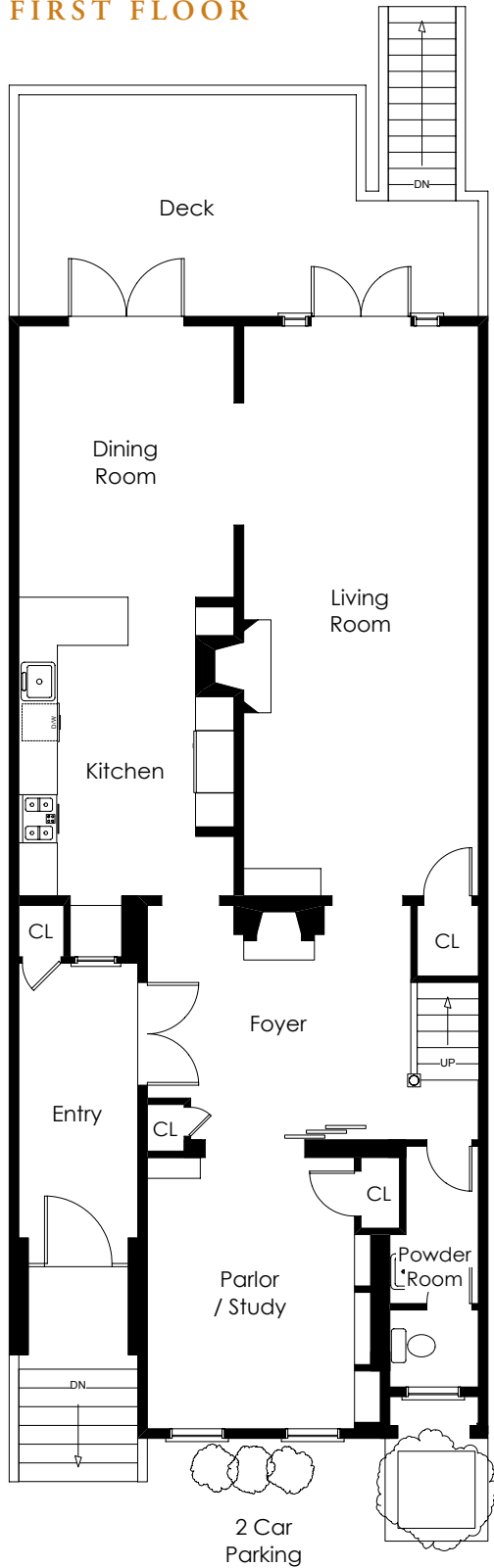


TRI Coldwell Banker, 1699 Van Ness Avenue, San Francisco, CA 94109 415.229.1211 Fax 415.563.3198

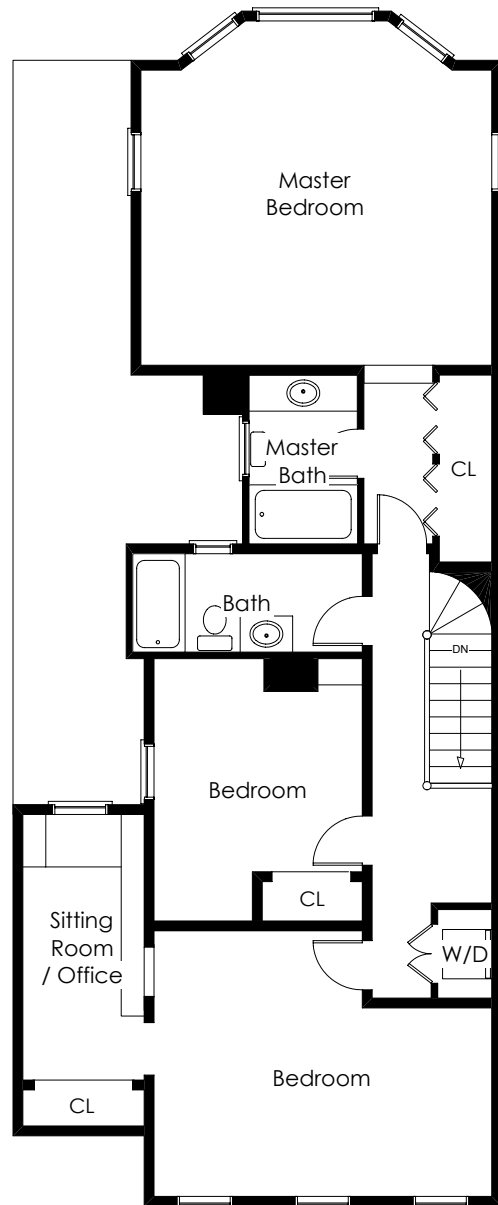
Coldwell Banker believes this information to be correct but has not verified this information and assumes no legal responsibility for its accuracy. Buyers should investigate these issues to their own satisfaction. Independently Owned and Operated by NRT Inc.

FLOOR PLAN

FIRST FLOOR



SECOND FLOOR



FLOOR PLAN

BASEMENT LEVEL

